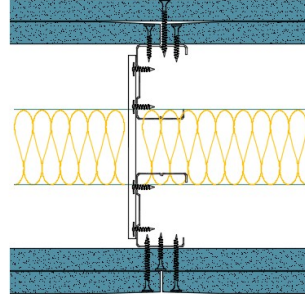


TWC50-S-60(50)(200) - SPEEDLINE System Data Sheet - Version V1 (24-10-23)

Twin SPEEDLINE 50mm 'C' Stud Partition @600mm
Ctrs, with 2x Siniat GTEC 15mm dB Board each
side, 50mm APR



System Performance Breakdown

Fire Resistance:

BS476 Part 22:1987:

Test Ref & Date or Applied Ref & Report:

Max Height:

Thickness:

Duty Grade: BS 5234: Part 2:1992:

Sound Insulation:

90/90 Minutes (Integrity/Insulation).

BRE-P100456-1085 - BRE Report P102396-1011C

Refer to Speedline Specification Clause

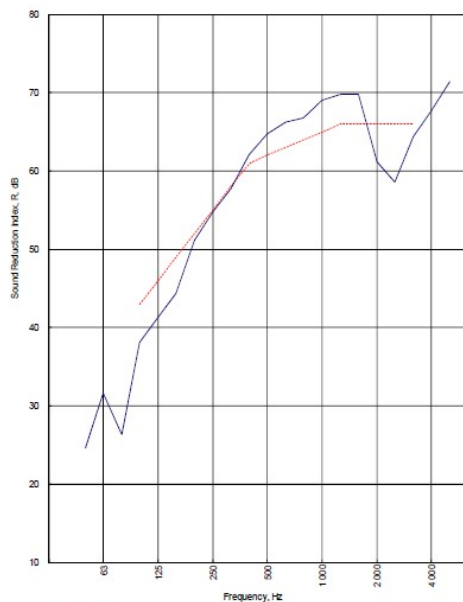
200 mm. (At Base Track, Excluding Finishes)

Severe - Annexes A-F

62 R_w dB, -7Ctr Date Tested or Assessed Against - 07/01/2014

Test Code:
H18567AA
Test Date:
07/01/2014

Freq. Hz	R dB
50	24.6
63	31.6
80	26.3
100	38.1
125	41.3
160	44.4
200	51.1
250	54.8
315	57.7
400	62.1
500	64.7
630	66.3
800	66.8
1000	69.1
1250	69.8
1600	69.8
2000	61.2
2500	58.6
3150	64.4
4000	67.7
5000	71.4



Rating according to BS EN ISO 717-1:2013	R_w (C;Ctr) = 62 (-2;-7) dB		
Evaluation based on laboratory measurement results obtained by an engineering method:	$C_{100-3150} = -6$ dB	$C_{100-5000} = -6$ dB	$C_{100-5000} = -2$ dB
	$C_{10,50-3150} = -18$ dB	$C_{10,50-5000} = -18$ dB	$C_{10,100-5000} = -7$ dB

TESTED AT ONE OF THE UKAS ACCREDITED LABORATORIES BELOW

B.T.C (H-Ref on Graph)

B.R.E

AIRO

S.R.L

Customer: Metsec plc Hepsec Division

BTC 18567A: Page 9 of 12



SPEEDLINE Drywall Systems, Adsetts House, 16 Europa View, Sheffield Business Park, Sheffield, S9 1XH.

Tel: 0114 231 8030.

Email: enquiries@speedlinedrywall.co.uk

(As per the requirements set out in ISO/IEC 17025:2017 regarding test data the results stated have been carried out by voestalpine Metsec plc as part of the contract to supply Speedline Metal Sections to SIG Plc)